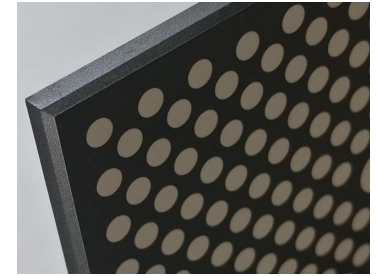


V3 Key features:

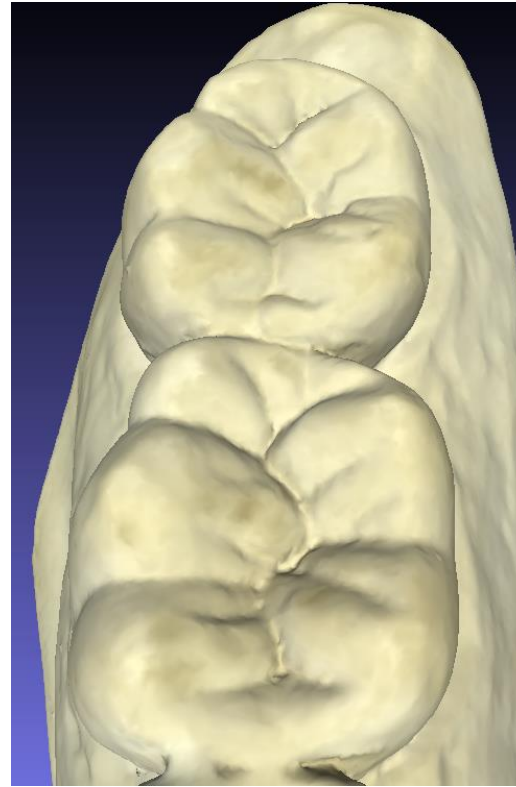
The improved BIO | DS 3D comes with a highly accurate glass calibration plate which enables greater scan sharpness and cross arch accuracy.



V2 sharpness:



V3 sharpness:



- This latest hardware incorporates several design updates to increase reliability.
- The new software incorporates features such as denture scanning and a wider field of view – see the release notes for a fuller description.

Download the scanner software for Windows:

Version	New features and improvements	Download link
DS 3D Scan v1.22 (latest) 1 st July 2020	<ul style="list-style-type: none">- Gives you improved accuracy and sharper scan images when used with the latest BIO DS 3Dscanner (V3).- New 3D processing algorithm which reduces dimple artefacts in the model.- Maximum model scan diameter enlarged to accommodate extra large jaws.- New alignment functions available for dentures and triple tray re-alignment.- Faster post processing time (almost twice as fast).- Several UI improvements and bug fixes.	Download
DS 3D Scan v1.11 10 th Feb 2020	<ul style="list-style-type: none">- Denture scanning.- Scan angles improved for models: no need to jack the models, less likely to need to add views.- Impression scan: crop radius increased to 45mm on v2 scanners to allow for larger impression scanning.- New UI images to make clearer which holders are expected by the scanner.- Add view improvements; Alignment bug fix, ensure that the vertical motor can not go out of range, if the alignment is bad ignore it - so the good scan is not spoilt.- Manual exposure option added to help capture dark objects (requires v2.06 firmware or above else the option is hidden). For example, if it is a dark impression in a white holder, you can override auto exposure and over expose the holder to pick up the dark impression.- Ground plane detection more reliable.	Download
DS 3D Scan v1.08 24 th Dec 2019	<ul style="list-style-type: none">- First release.	Download

V3 upgrade kit:

V3 scanners are on sale now. However, if you own one of the original black V2 scanners you may upgrade in three steps.

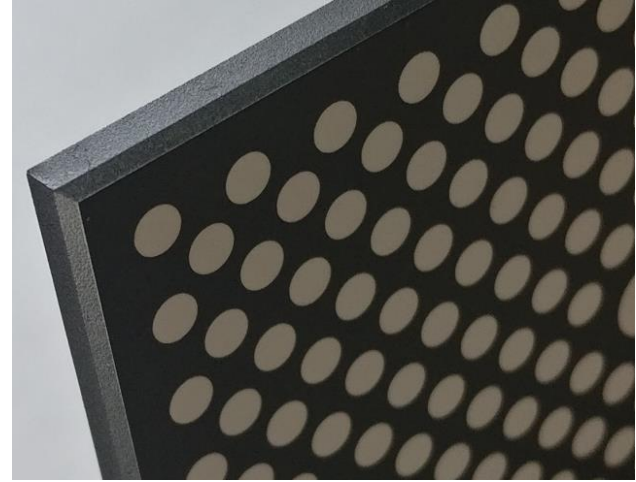
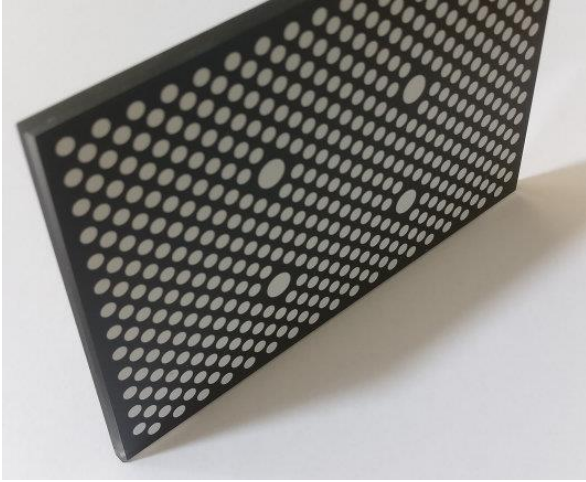
- 1). Order a new, more accurate glass calibration plate.
- 2). Install the latest PC software.
- 3). Upgrade the firmware of your scanner to V3.01 using the appropriate firmware update code.



The original black V2 scanner.

Step 1). Ordering the new calibration plate:

Glass calibration plate item # CP-DS3D-V3.



Step 2 and 3). Updating your PC software and BIO | DS 3D firmware:

a). Download and run the latest version of DS 3D scan (v1.22), using the link on this webpage.

b). Find you scanner's version number by clicking Settings then Update:

Scanner Firmware

Serial: 00026

Current version: 3.03

Update Code:

Please do not turn off the scanner until the lighting returns to blue.

Note: updates can take 15 minutes or more to complete, and power loss during an update risks damage to the scanner.

c). Select and enter the appropriate update code from the table below:

Your current firmware version	New firmware version:	Update code:	New features and improvements
2.06	3.01	1MeNVivlt6_G4bQyh-VEz16MgrXRm3cJG	Major accuracy improvements: - sharper scans, - better cross arch accuracy, - improved detection of dark surfaces. (when used with the new V3 glass calibration plates).
2.05	3.01	1KdxvpjU6HZq8ioJLYO7IQbN6ROvKdeOo	

Important: You must use the correct update code for your scanner else the scanner could become dysfunctional.

After starting the update, be sure to wait for the blue projection light to return before powering off your scanner.

d). Now recalibrate your scanner using the new glass calibration plate for increased sharpness and accuracy.

Feel free to contact support for guidance.