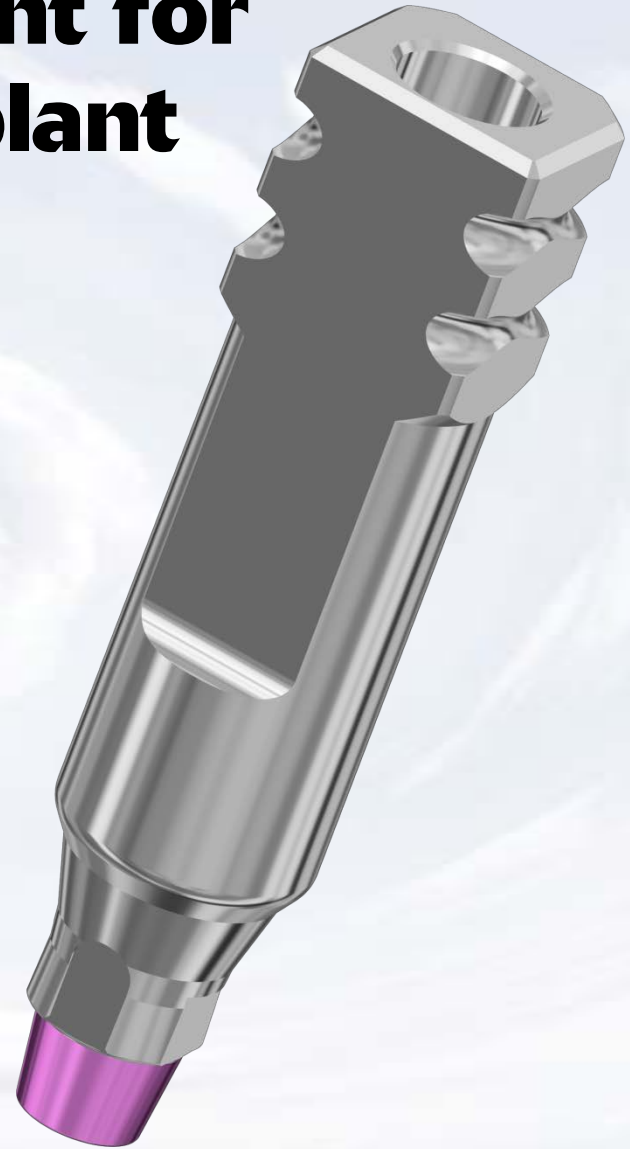
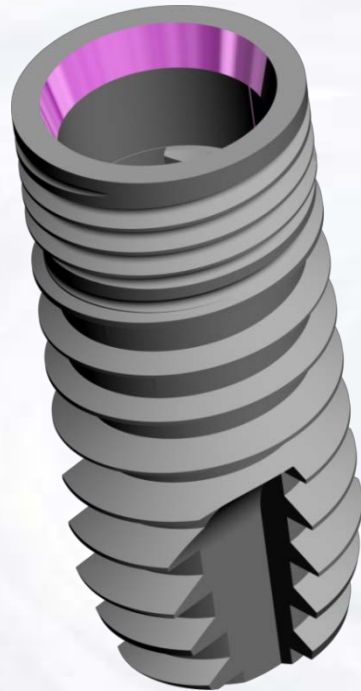


# MPA Abutment for Quattro Implant



**Blue Sky Bio**

# MPA Abutment for Quattro Implant



The MPA Abutment functions as both the implant level impression coping and the final abutment



**Blue Sky Bio**

# MPA Abutment for Quattro Implant



Choose matching abutment

Healing abutment in place

The presentation that follows lists only one combination of parts  
Obviously the clinical situation may call for substitution of another part on this slide

## 4.8 Abutment Narrow Platform



Size	Part #
MPA Kit 4.8, Narrow	KMPASQN48
MPA Abutment 4.8mm, Narrow	MPASQN48
Implant Level Analog, Narrow	BISQN

## 4.1 Abutment Regular Platform







Size	Part #
MPA Kit 4.1, Regular	KMPASQR41
MPA Abutment 4.1mm, Regular	MPASQR41
Implant Level Analog, Regular	BISQR



Blue Sky Bio

# MPA Abutment for Quattro Implant

	Size	Part #
	Torque/Ratchet Wrench	TR-900-01
	Thumbwheel/ITI Wrench Adapter	ITI-Adapter
	.048 Hex Driver short	SDS048
	.048 Hex Driver long	SDL048

Prosthetic instruments needed



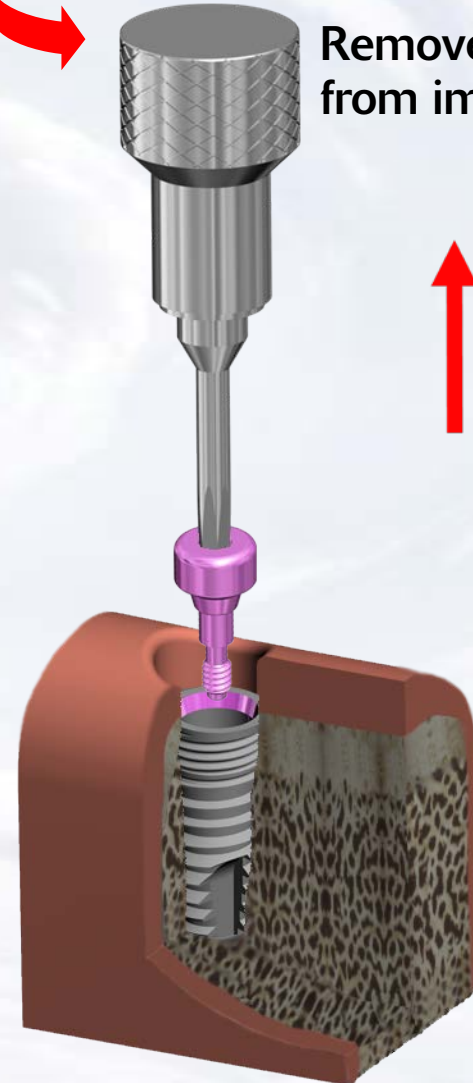
**Blue Sky Bio**

# MPA Abutment for Quattro Implant

Assemble screw driver with Thumb Knob



Remove healing abutment from implant



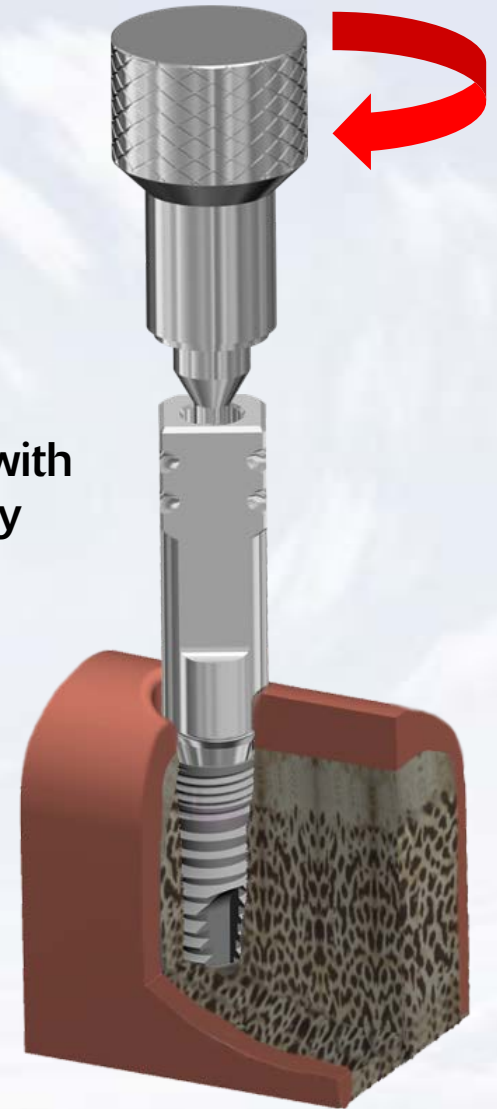
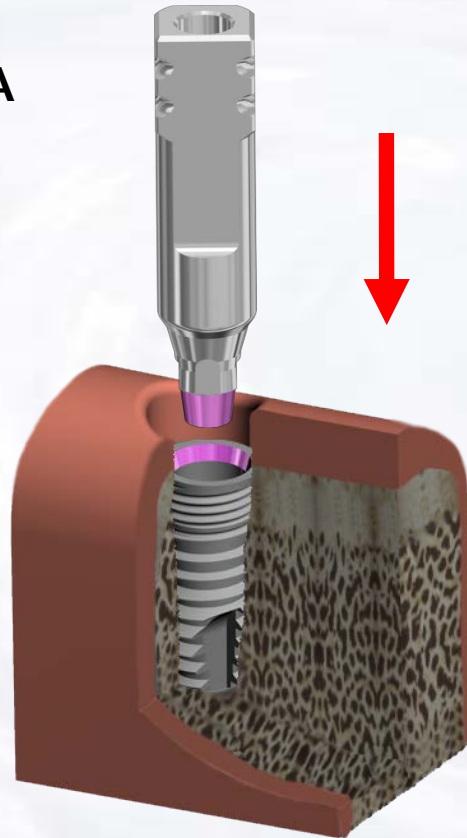
Blue Sky Bio

# MPA Abutment for Quattro Implant

Insert the MPA abutment into the implant ensuring the appropriate orientation

Insert screw into MPA abutment

Tighten screw with finger force only

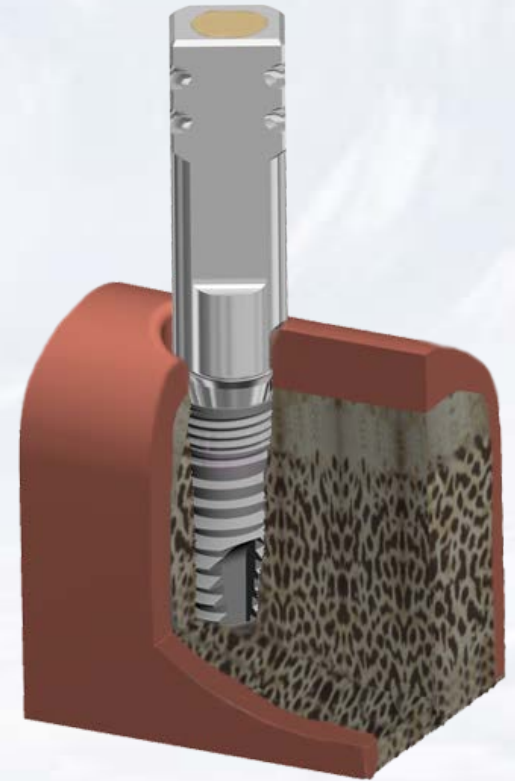


Blue Sky Bio

# MPA Abutment for Quattro Implant

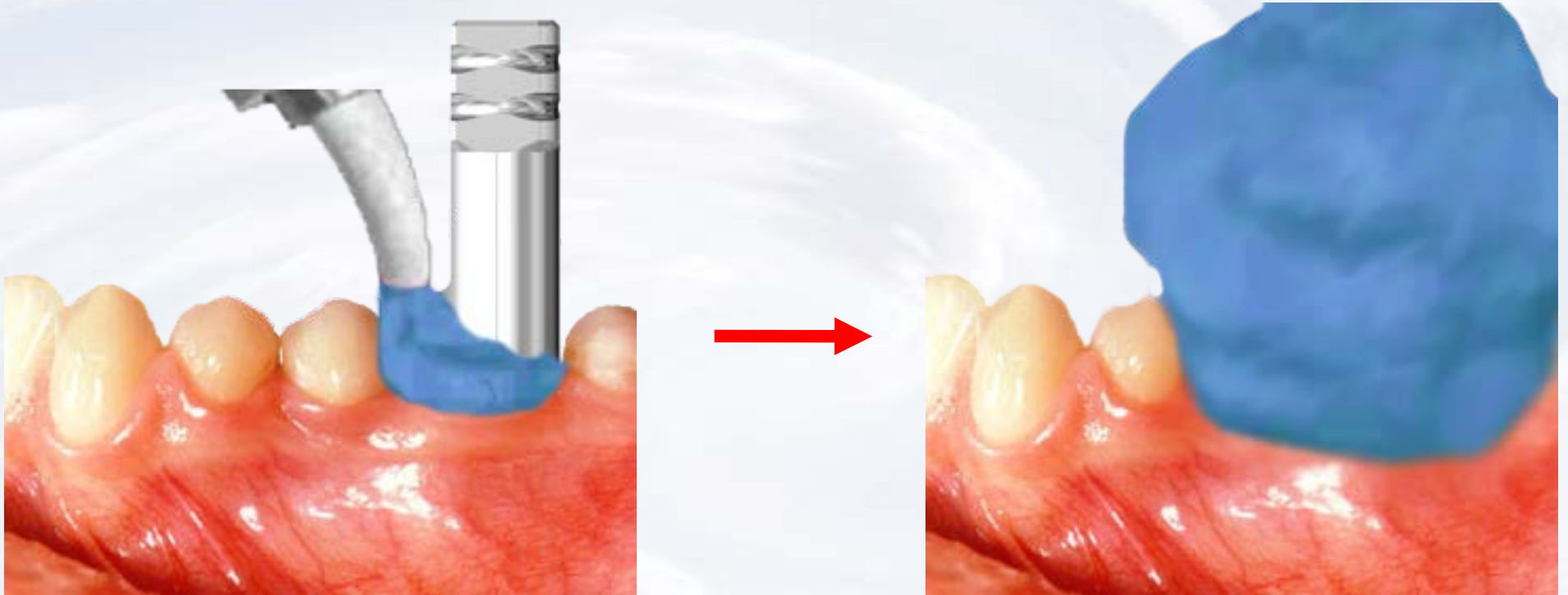


Apply wax to the top of the MPA abutment to seal screw access to keep impression material out of the access hole



Blue Sky Bio

# MPA Abutment for Quattro Implant



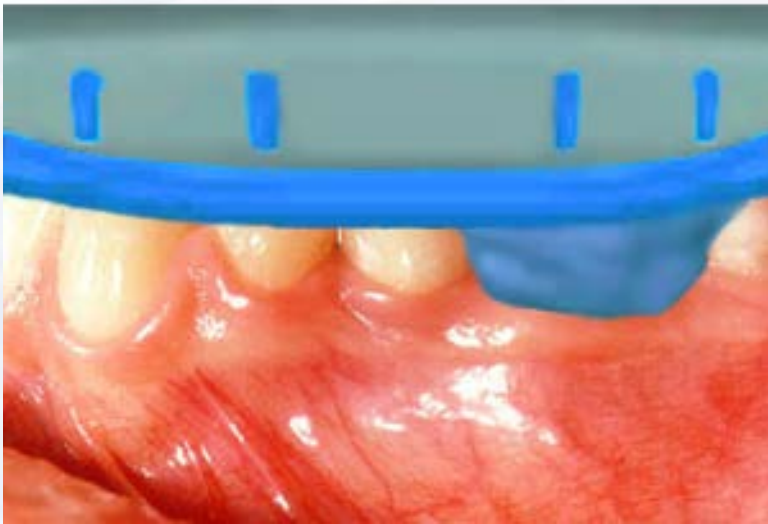
Inject impression material around the abutment



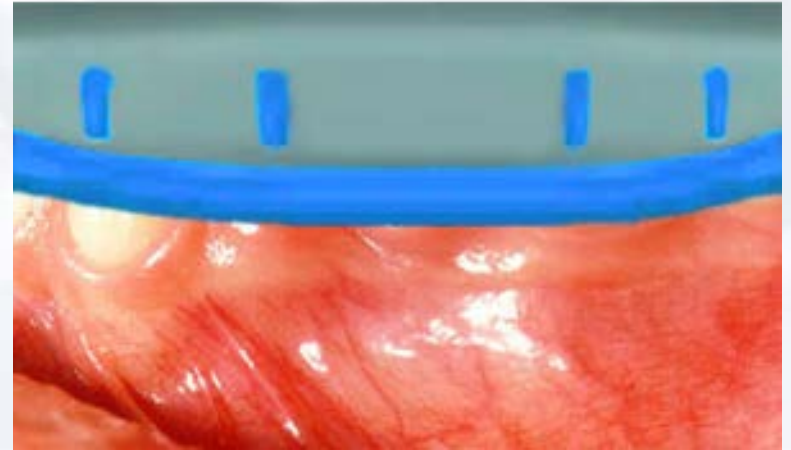
**Blue Sky Bio**



# MPA Abutment for Quattro Implant



Insert tray with impression material

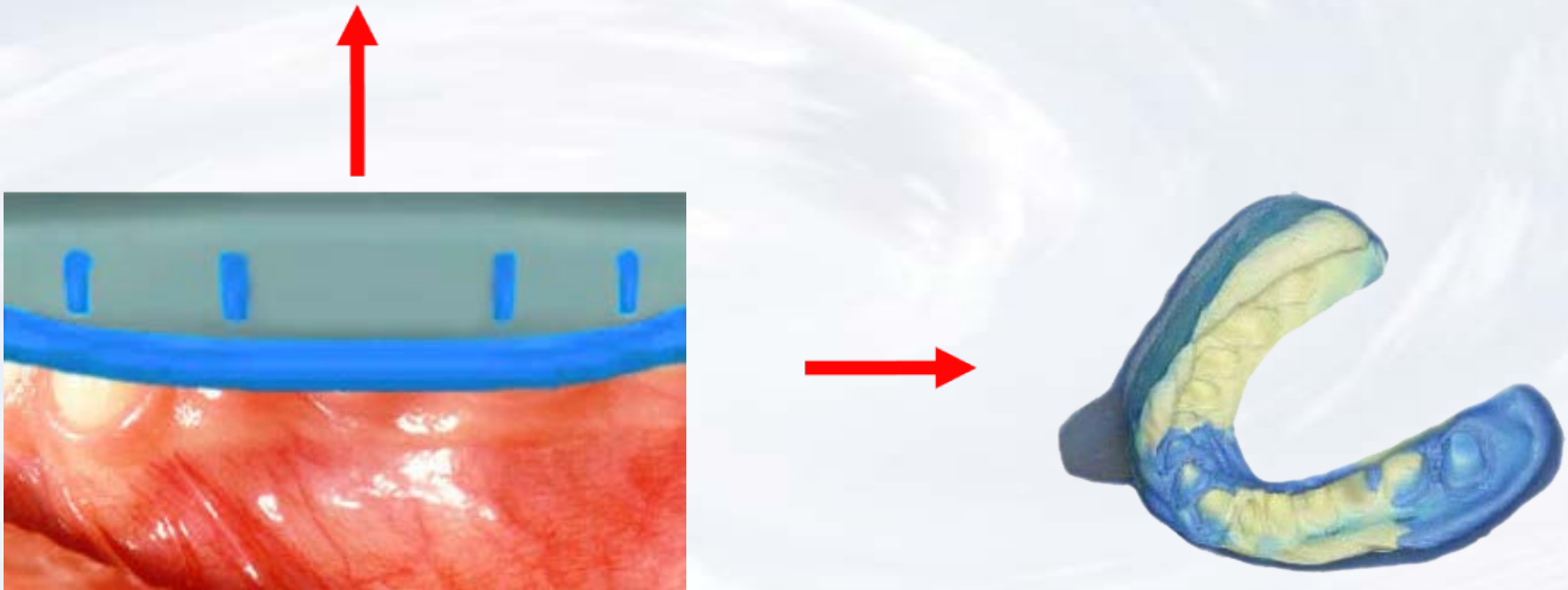


Seat impression to capture dental arch



**Blue Sky Bio**

# MPA Abutment for Quattro Implant

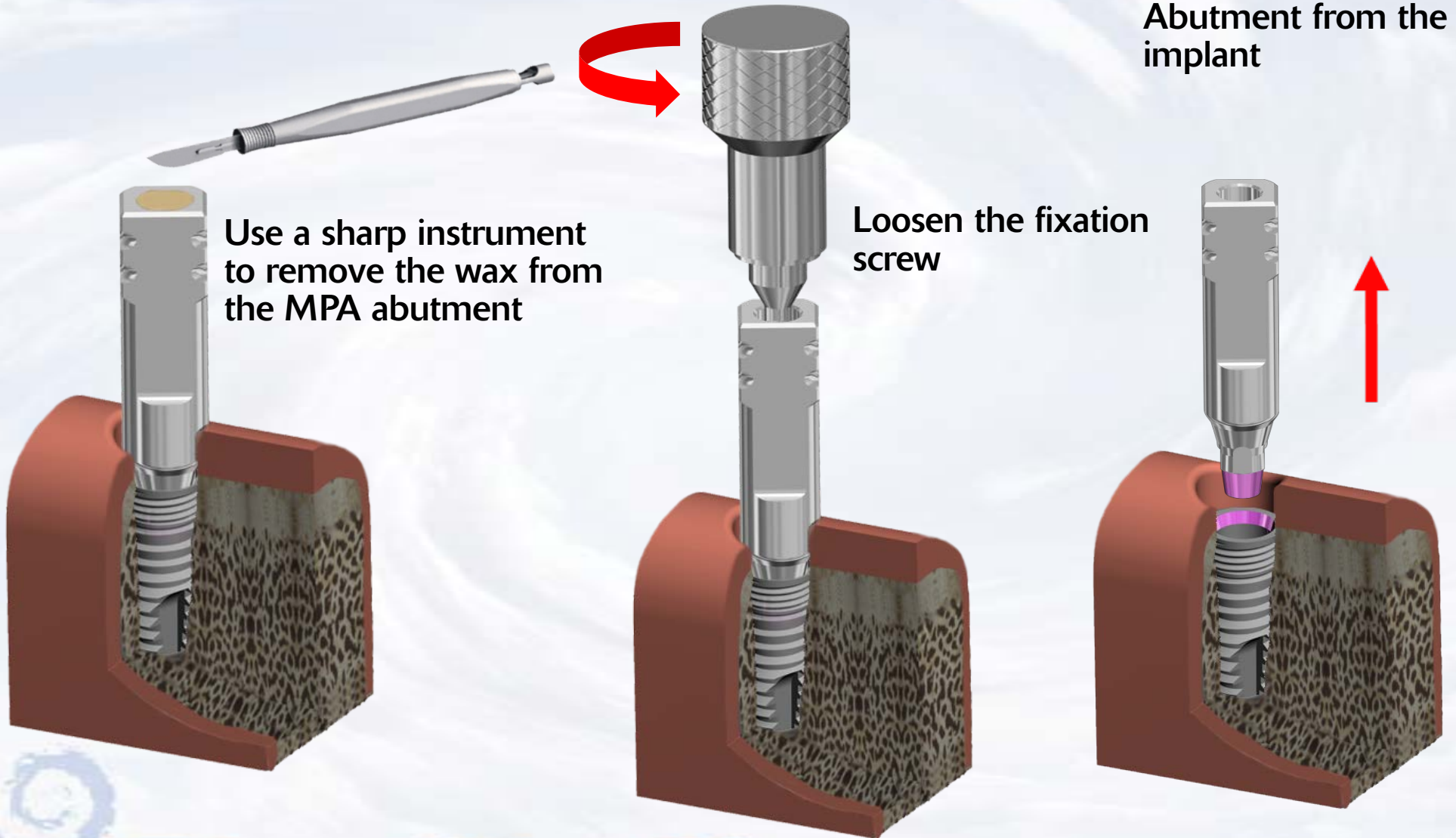


Remove the impression from the mouth when material has set

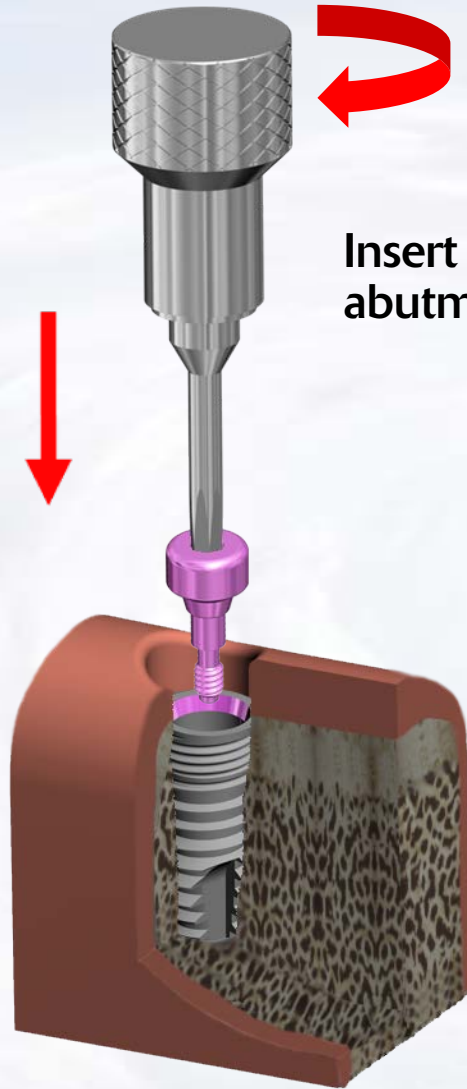


**Blue Sky Bio**

# MPA Abutment for Quattro Implant



# MPA Abutment for Quattro Implant



Insert healing  
abutment into implant

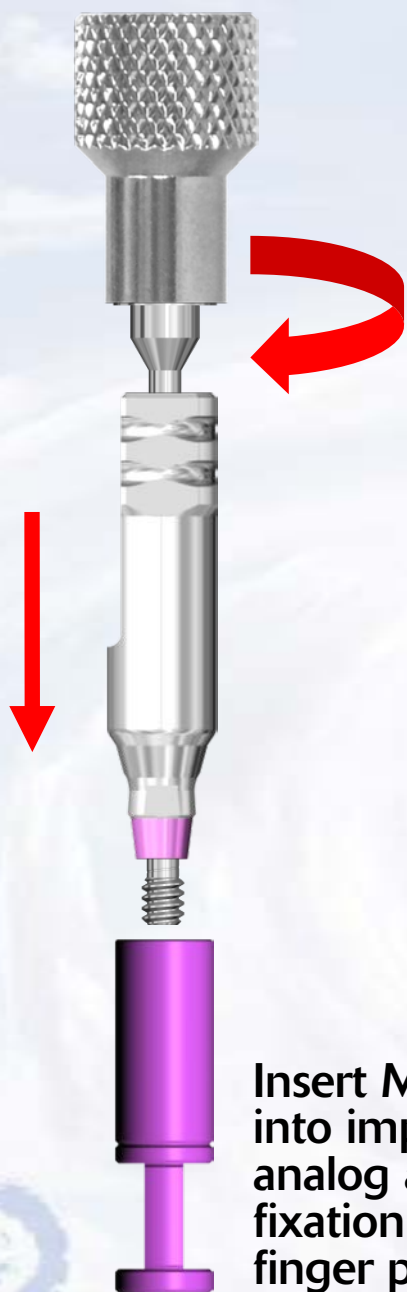


Healing abutment in place



Blue Sky Bio

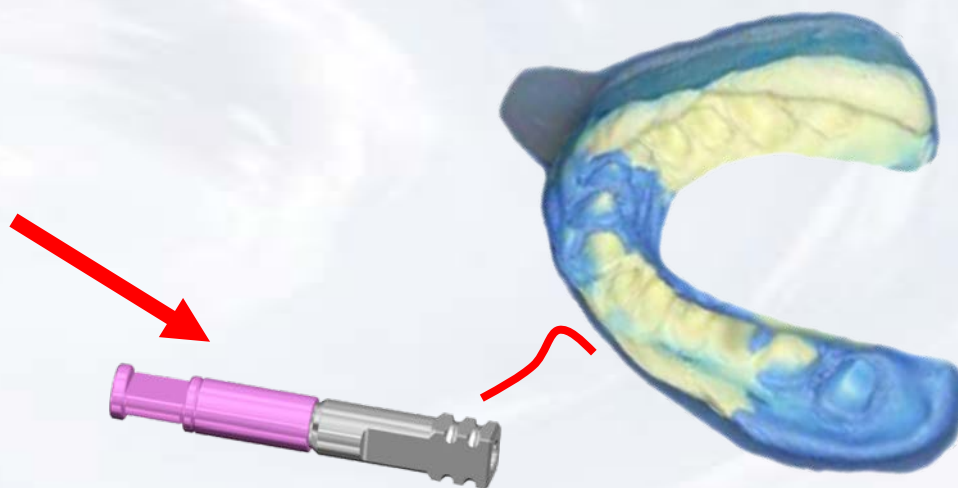
# MPA Abutment for Quattro Implant



Insert MPA Abutment into implant level analog and tighten fixation screw with finger pressure



Assembled MPA Abutment with implant level analog



Insert MPA Abutment/analog assembly into impression.



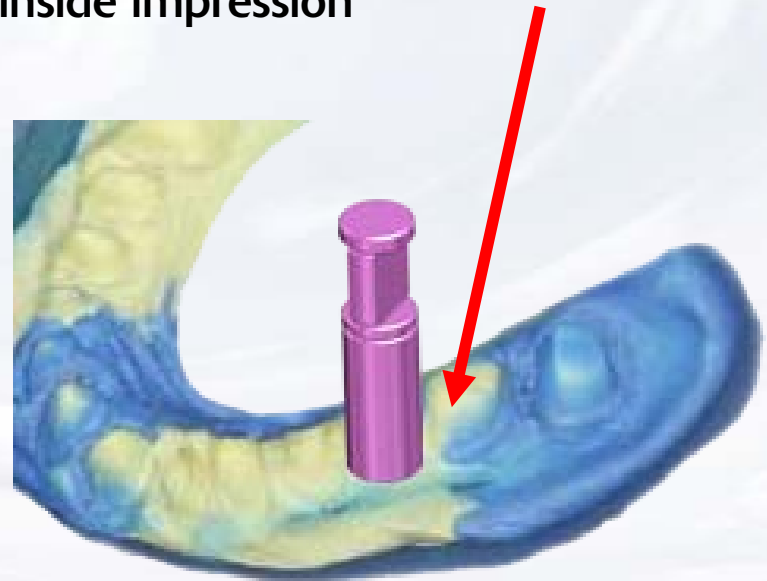
Blue Sky Bio

# MPA Abutment for Quattro Implant

Align the flats of MPA Abutment with the flats within the impression and insert the abutment/analog assembly into the impression



MPA Abutment/analog assembly completely seated inside impression



**Blue Sky Bio**

# MPA Abutment for Quattro Implant

Apply soft tissue replica material around implant level analog



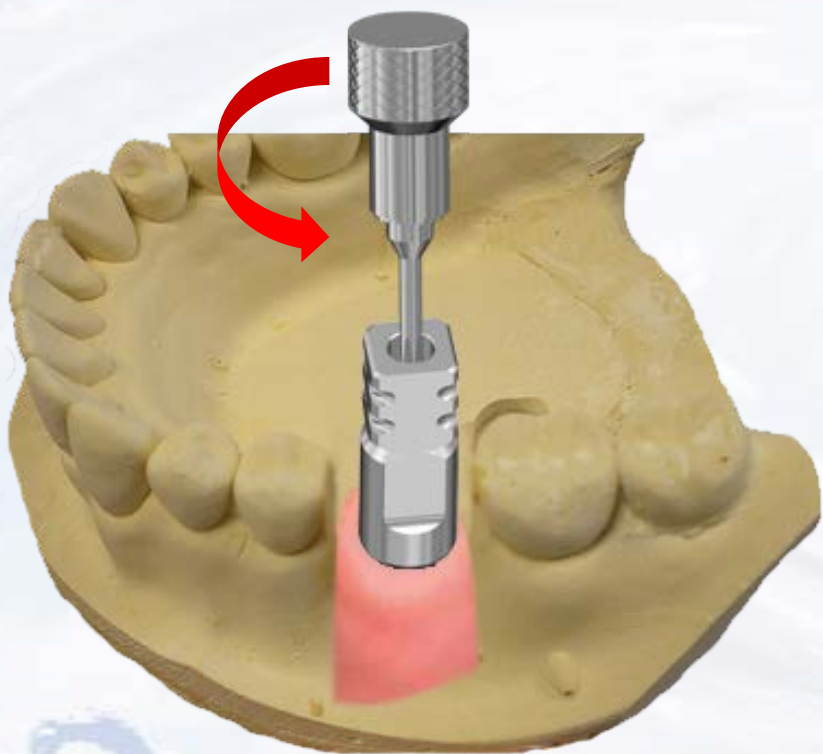
Pour dental stone into impression



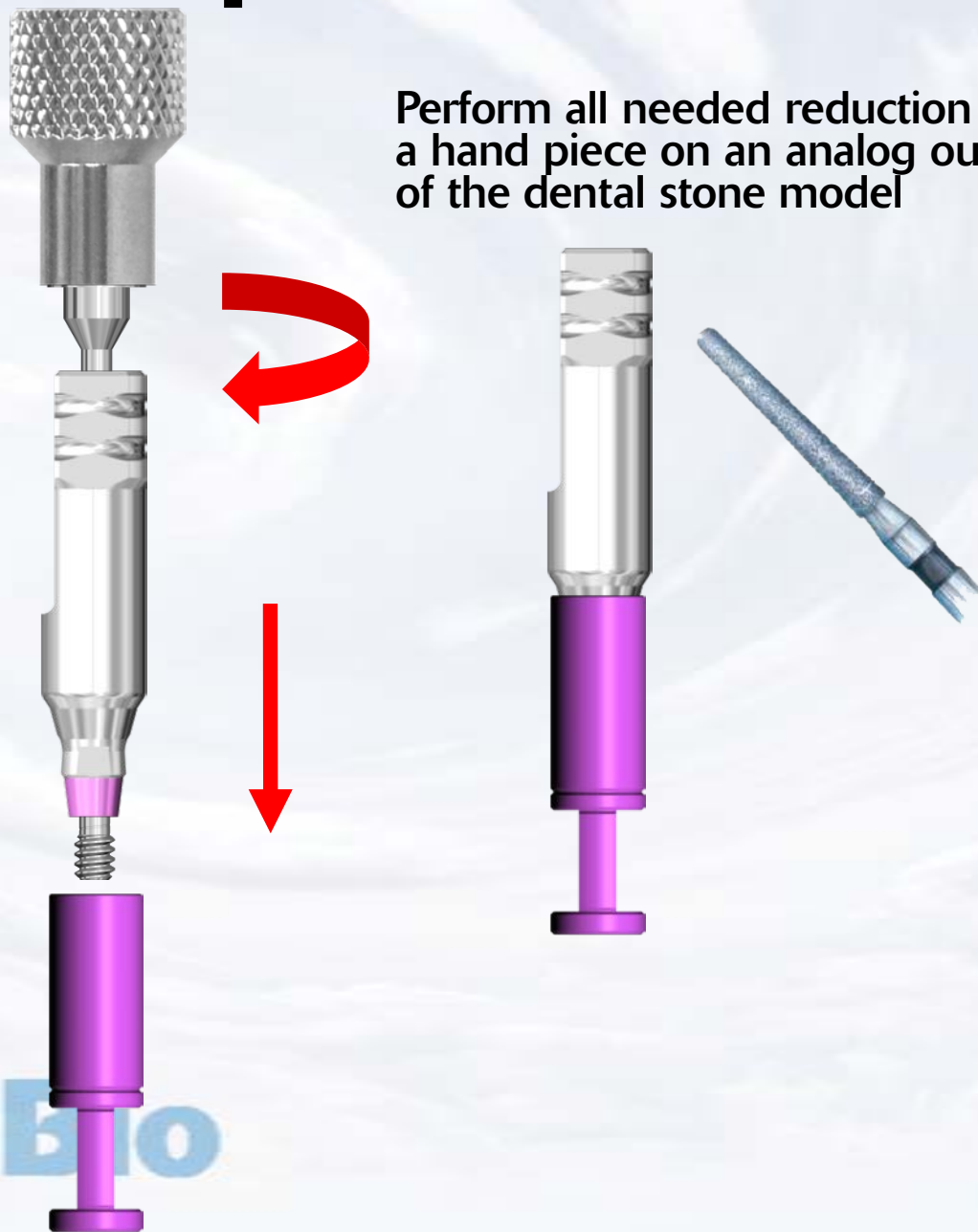
**Blue Sky Bio**

# MPA Abutment for Quattro Implant

Remove master cast from impression and after marking the areas for reduction on the abutment, remove it from the stone model



Perform all needed reduction with a hand piece on an analog outside of the dental stone model

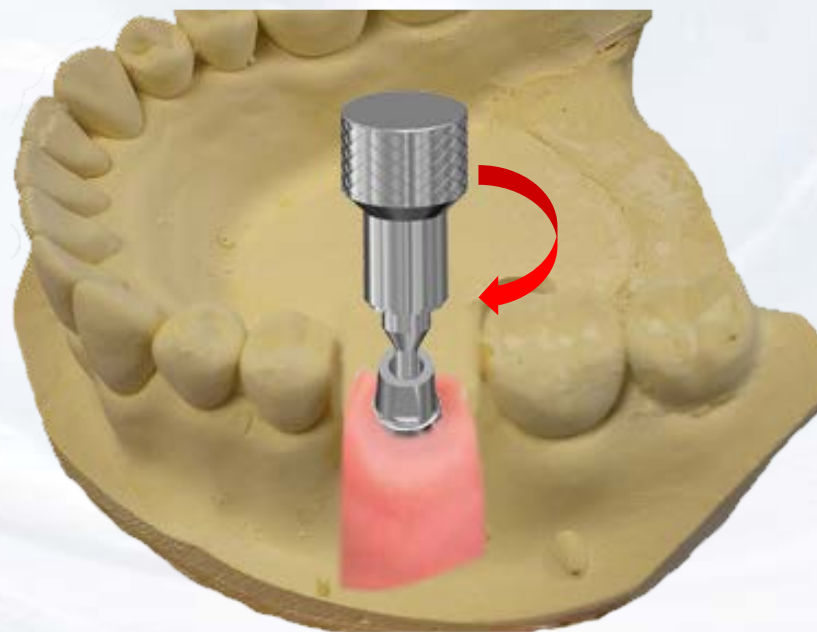


Blue Sky Bio

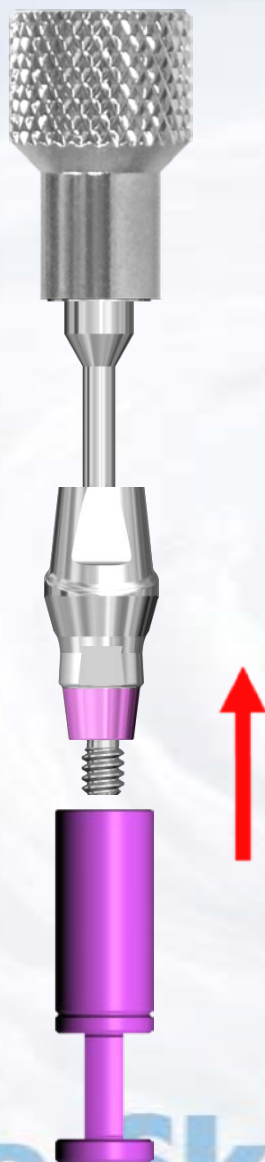


# MPA Abutment for Quattro Implant

Insert the customized abutment into the model



Remove the adjusted Abutment from the analog



Blue Sky Bio

# MPA Abutment for Quattro Implant

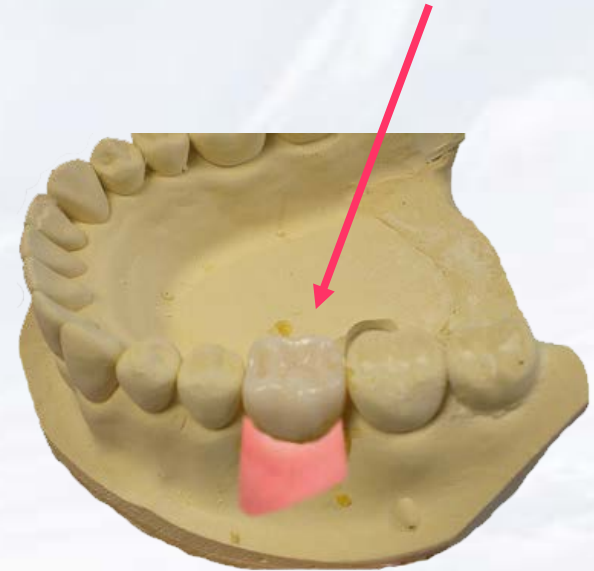
Add die spacer on the abutment and wax up the undercasting directly on the abutment



Cast wax up in usual manner and try in the casting on the abutment



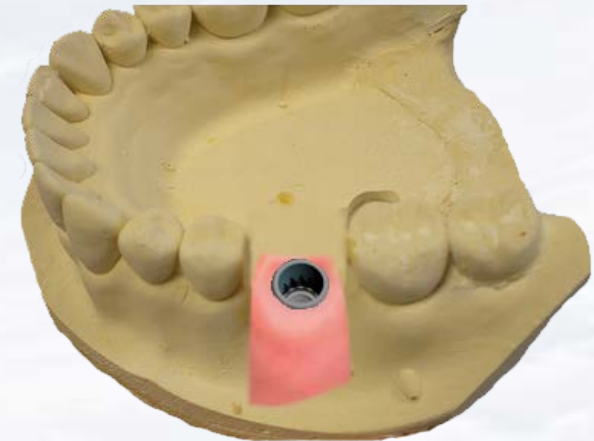
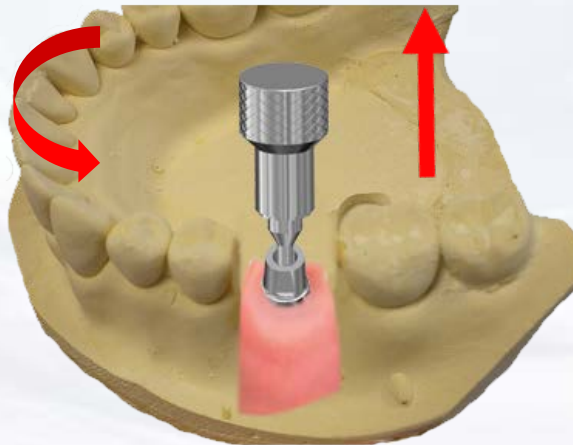
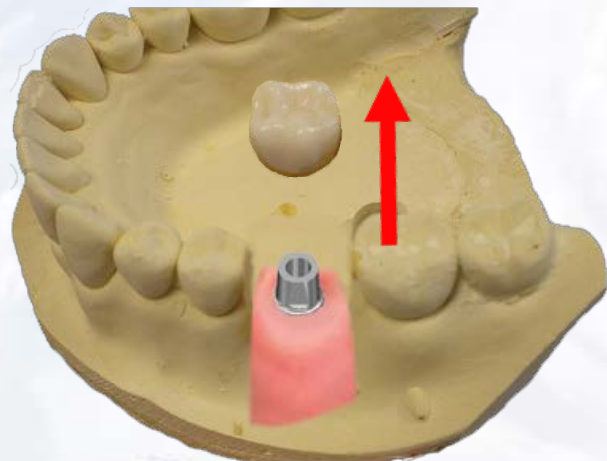
Stack and fire the ceramic in the usual manner and finish the restoration



Blue Sky Bio

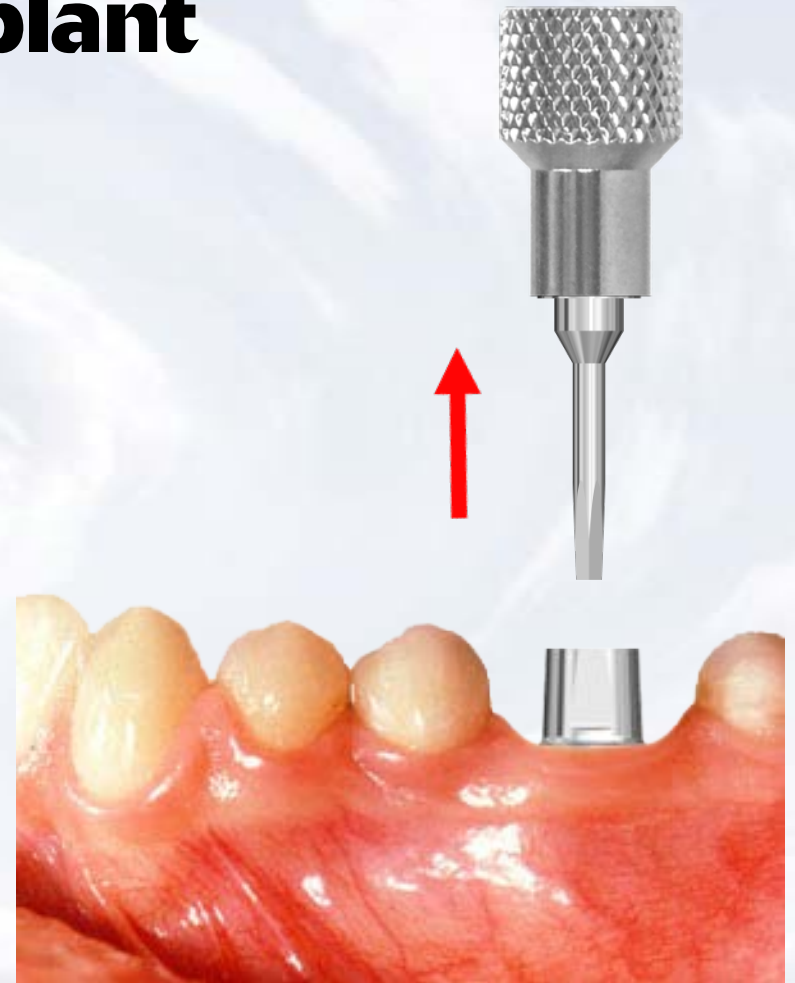
# MPA Abutment for Quattro Implant

Remove crown and abutment from model



Blue Sky Bio

# MPA Abutment for Quattro Implant



Remove healing abutment and insert final abutment into implant orienting it according to the instructions from the laboratory



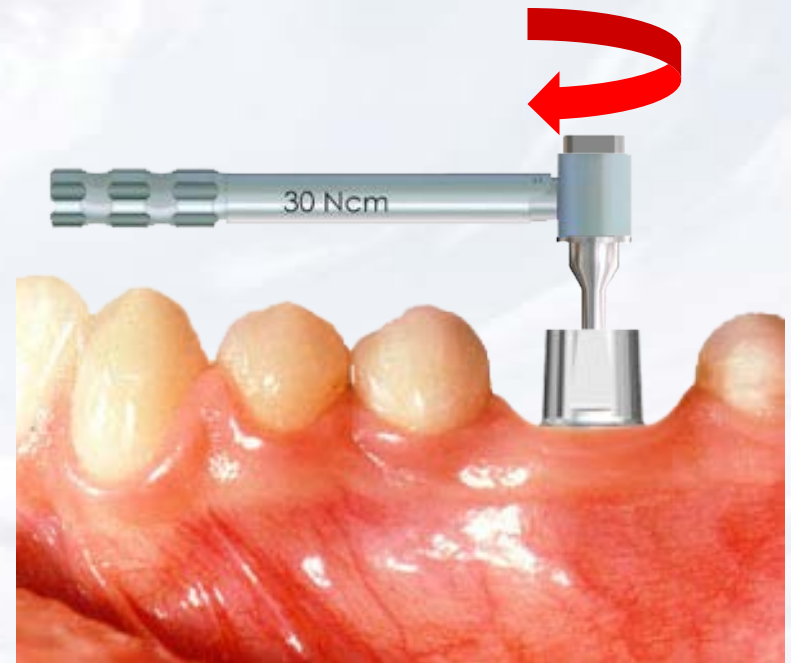
**Blue Sky Bio**

# MPA Abutment for Quattro Implant

Insert the hex driver within the 30Ncm torque ratchet



Insert driver into the abutment screw and turn torque ratchet clockwise until torque of 30 Ncm is reached and the head of the ratchet releases



**Blue Sky Bio**

# MPA Abutment for Quattro Implant



Cement restoration on abutment



**Blue Sky Bio**