



## Drawing the Nerve

Identifying the nerve makes it prominent visually, as well as allowing the software to warn the user if an implant is too close to the nerve.



Identify the mental foramen on the cross sections view (top left)



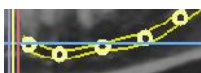
Click on the Add Nerve icon to open the Nerve Panel,



Click the Detect Nerve button.



In the cross section view click on the entrance mental foramen and Blue Sky Plan will draw the nerve .



If necessary the nerve position can be adjusted by left dragging any of the thick circular control points in any of the 2D views.

Repeat the same procedure for the opposite nerve.



## Additional Information

A nerve can be drawn in manually or just a nerve segment such as to fill in an anterior loop. In most cases it is easier to draw the nerve using the Panoramic view.



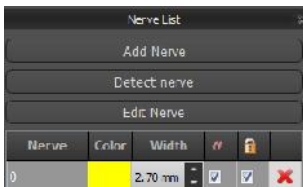
Click the Slice/Composite icon to assure you are in Slice View.



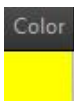
Click the Add Nerve button, click and move the cursor to draw the nerve. Notice a new nerve number will be added to the Nerve List.



If necessary, the user can continue a nerve through different panoramic slices by adjusting the vertical sidebar on the right side of the pano view.



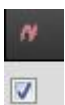
Other modifications can be made directly from the Nerve List.



The nerve color can be changed by left-clicking on that nerve's color in the Nerve list. Select the desired color from the Select Color window, then click OK.



The nerve width can be changed by clicking on the up or down arrows in the Width column or highlighting the value and editing .



A nerve can be hidden by unchecking the box in the Nerve Visibility column.



**BlueSkyPlan.com**

Support phone:  
1-312-344-3950  
plan@blueskybio.com



To prevent changes to the nerve, click the Lock checkbox. The control points will disappear, thus preventing its movement.



A nerve can be deleted by clicking on the red "X" in the rightmost column.