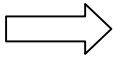


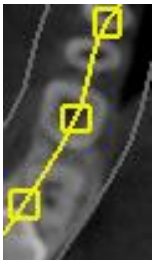


Panoramic Curve

When a CT scan is loaded into Blue Sky Plan, the software automatically draws the relevant panoramic curve(s) for the case.



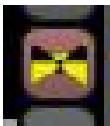
The "Automatic Curve" button can be used to toggle between viewing the mandible or maxillary arches (for two arch cases).



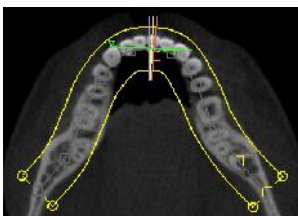
The panoramic curve can be modified by dragging any of the yellow square control points to adjust the curve's shape and position.

The shape and positioning of the panoramic curve affects panoramic (bottom right) and cross sections (top left) view, which are compiled based on the panoramic curve. This is very useful in order to emphasize structures such as the mandibular nerves.

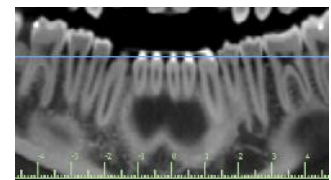
Additional Information

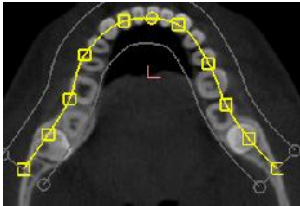


The button to the right of panoramic (bottom right) view, allows the user to control if they are viewing a single slice in the panoramic view, or a composite view of all panoramic slices together.

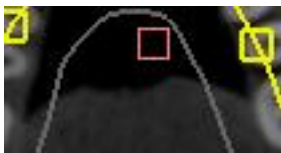
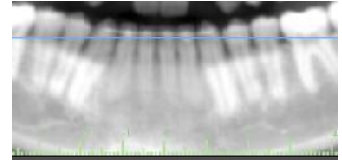


The emphasized single yellow panoramic curve demonstrates that a single slice is being viewed and the panoramic view looks like right image.

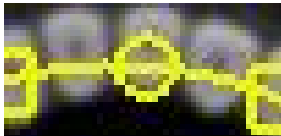




When the inner and outer lines are emphasized in yellow, the user is show a composite panoramic view of all DICOM slices, and the panoramic view looks like the image to the right.



Dragging the red square control point will move the entire curve as a single unit.



Moving the panoramic circular control point will let you expand or contract the entire panoramic curve.



The width of the composite view can be controlled by adjusting the inner and outer composite curves. Dragging any of the four round control points at the end of the curve will include or exclude more slices, respectively, as well as widen the field of view in both the cross section and tangential views.