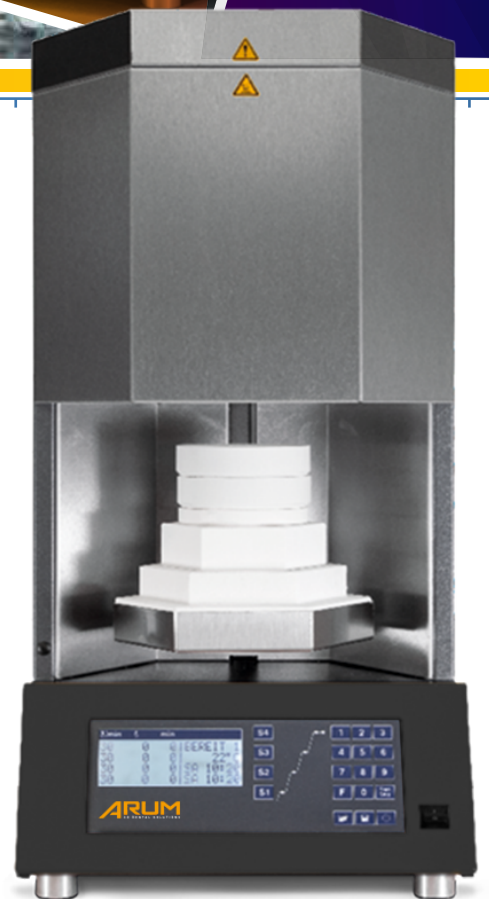




HTS-2/M/ZIRKON-120



MADE IN GERMANY



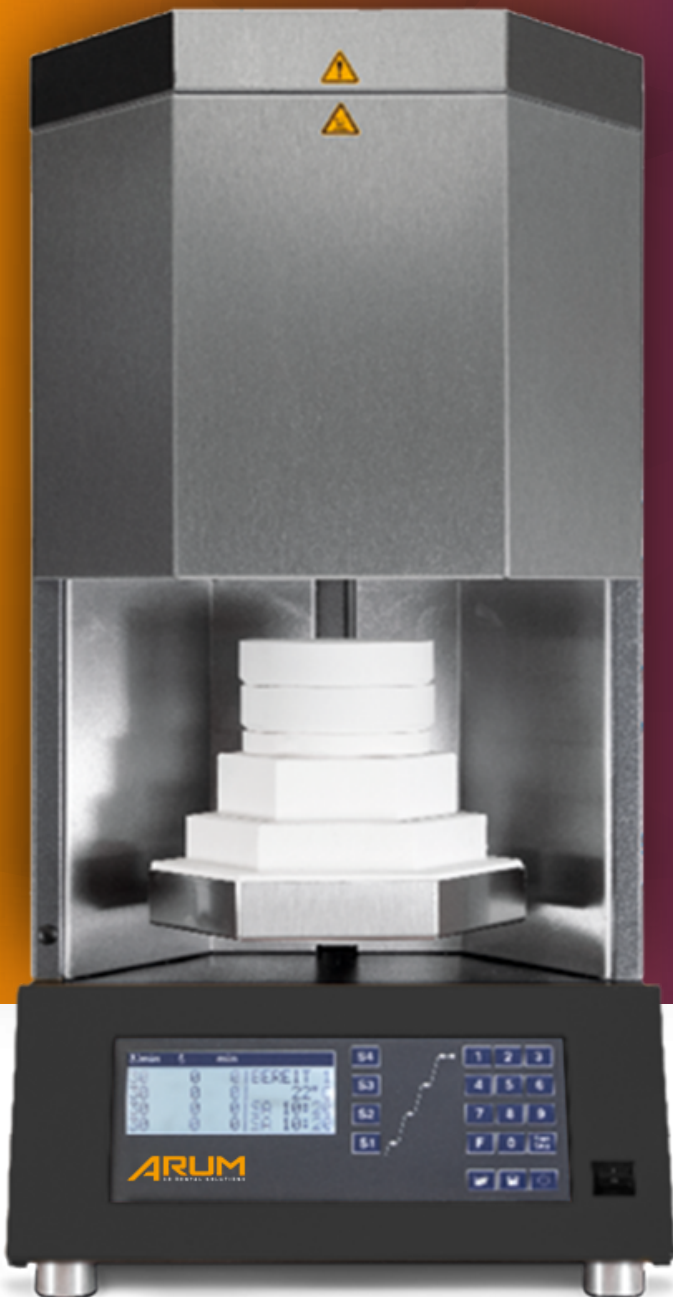
HTS-2/M/ZIRKON-120



60 SINGLE CROWNS or SINTERING DISC

- High purity molybdenum-disilicide heating elements PRO
- Maximum temperature 1650°C
- Heating-chamber capacity 2x Ø 120/30 mm
- Program control
 - LCD-Display
 - 4 stages
 - 30 program capacity
 - Special functions
- Service programs
 - A- Temperature control*
 - C- Purge heating chamber
 - E- Regenerate heating elements
- Thermocouple PtRh-Pt, type S
- Temperature accuracy at 1500°C +/- 3 °C
- Timer function

* only in conjunction with test-kit

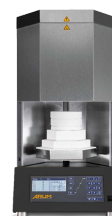


RS-232 Interface allows you to record real time program data for analysis or compliance



Technical data	HTS-2/M/ZIRKON-120
Power max.	3200 W
Voltage range; frequency	200–240 V; 50/60 Hz
Weight	60 kg
Dimensions W/D/H	390/500/790 mm


Technical data






HTS-2/M/ZIRKON-120
720200002

Details ✓ standard ✗ not compatible

Technical information

Heating-chamber height	mm	72
Max. heating-chamber capacity	number of trays	 2 x 120/30 mm

Heating system		
Process capability		
Max. temperature		
Heating elements	Type	
	Number	4

Process times CLASSIC [1*]		
Max. programmable heating rate	°C/min	30
Shortest heating period to 1.500°C at 230V	min	55
Shortest cooling period to 300°C	min	47
Process duration (incl. holding time 30 min)	min(h)	132(2,2)

Process times SPEED [1*]		
Max. programmable heating rate	°C/min	99
Shortest heating period to 1.500°C at 230V	min	25
Shortest cooling period to 750°C	min	18
Process duration (incl. holding time 30 min)	min(h)	73(1,2)

Programm control		
7-segment LED		✗
4-lines LCD		✓
Number of programmable stages		4
Program capacity		30
	Number of fixed programs	✗
	Number of customizable programs	30

Special programs		
Drying		✓
Heating-up ventilated		✓

Service programs		
A-Temperature control [2*]		✓
C-Purge heating chamber		✓
E-Regenerate heating elements		✓

Thermocouple		
PtRh-Pt, type S		✓

Special functions

Emergency cooling system		✗
RS 232 interface		✓
Door lift		✓
Shielding-gas supply		✗
Timer function		✓

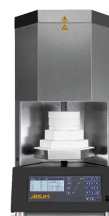
Technical data

Power max.	W	3200
Voltage range; frequency	V; Hz	200-240; 50/60
Weight	kg	60
Dimensions W/D/H	mm	390/500/790

[1*] Process values: Sintering temperature = 1500°C; holding time = 30min; 1 x sintering tray [2*] only in conjunction with test-kit

Scope of delivery

- ✓ standard
- optionally available
- ⊙ optionally available, but with reservations
- ✗ not compatible



HTS-2/M/ZIRKON-120
7202000002

Sintering tools		
8201000001	Sintered corundum AL, 4-6; 200g	●
8201000002	Sintering beads YTZ, 2.0; 200g	●
8201000003	Sintering beads YTZ, 1.25; 280g	●
8201000004	Sintering granulate YTZ; 200g	✓
8201000008	Sintering tray, 120/30***	✓
8201000010	Sintering tray lid, 120/4***	⊙
8201000014	Sintering tray SPEED, 120/30; slotted	✓
8201000015	Sintering tray SPEED, 120/30 (kit)	●
8201000018	Sintering base plate SPEED, 120/15	●
8201000019	Sintering base plate SPEED, top ring 120/15	●
8201000021	Sintering disc, 120/12***	⊙
8203000003	Stacking disc, 120/15 for sintering tray	✓

Accessories		
8202000001	Crucible tongs, 100-120mm	✓
8202000005	Diamond whetstone; for sintering discs	●
8202000008	Power cord EU, C19; 16A	✓
8202000009	Power cord USA, C19; 16A	●
8202000010	Power cord GB, C19; 13A	●

***ATTENTION! Not suitable for SPEED sintering!

**CONSISTENT.
RELIABLE.**



DENTAL

Axsys Dental Solutions
29627 West Tech Drive
Wixom, MI 48393

Web www.axsysdental.com
Mail info@axsysdental.com