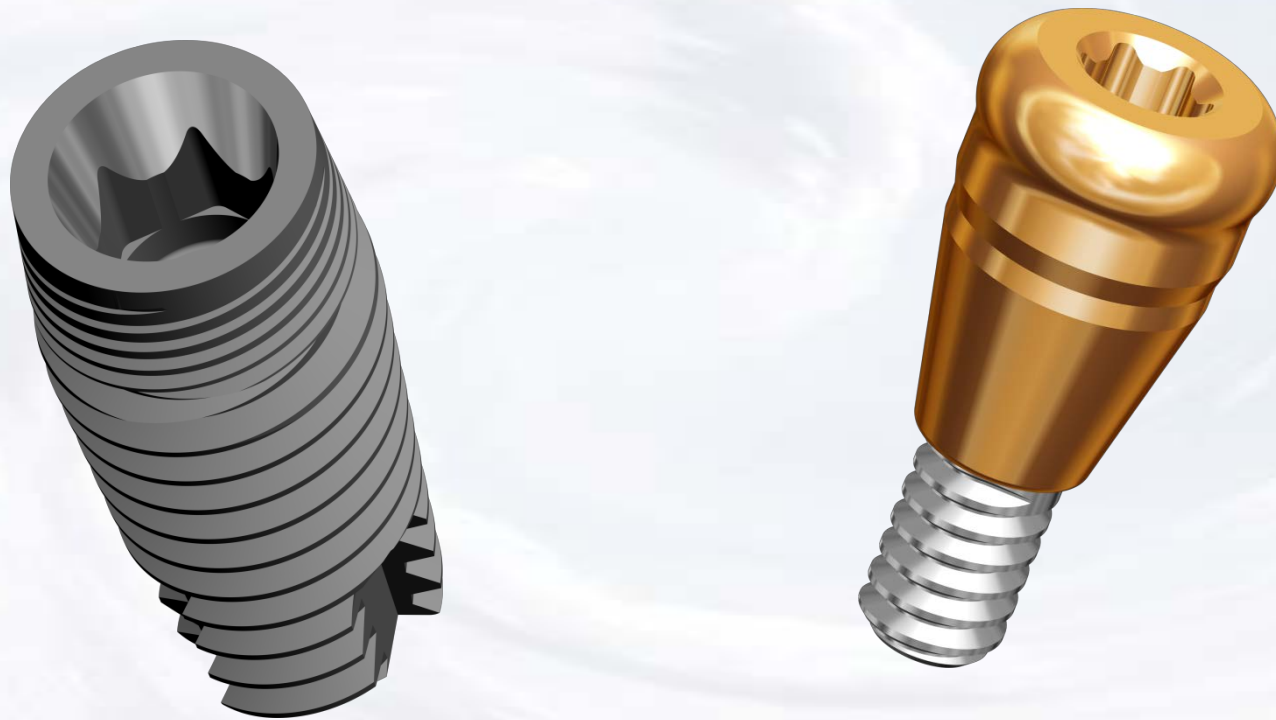


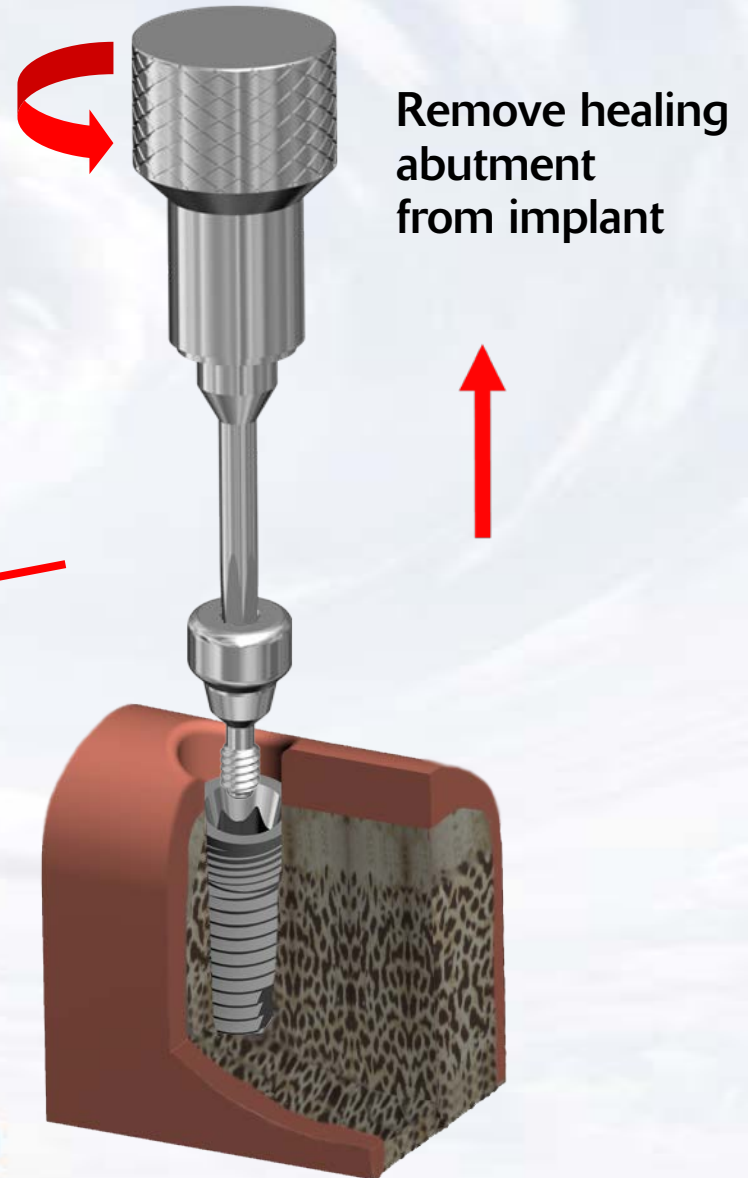
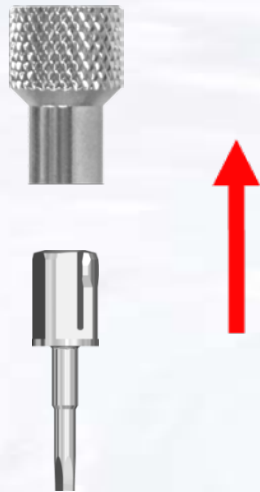
# Overdenture Chairside Technique



**Blue Sky Bio**

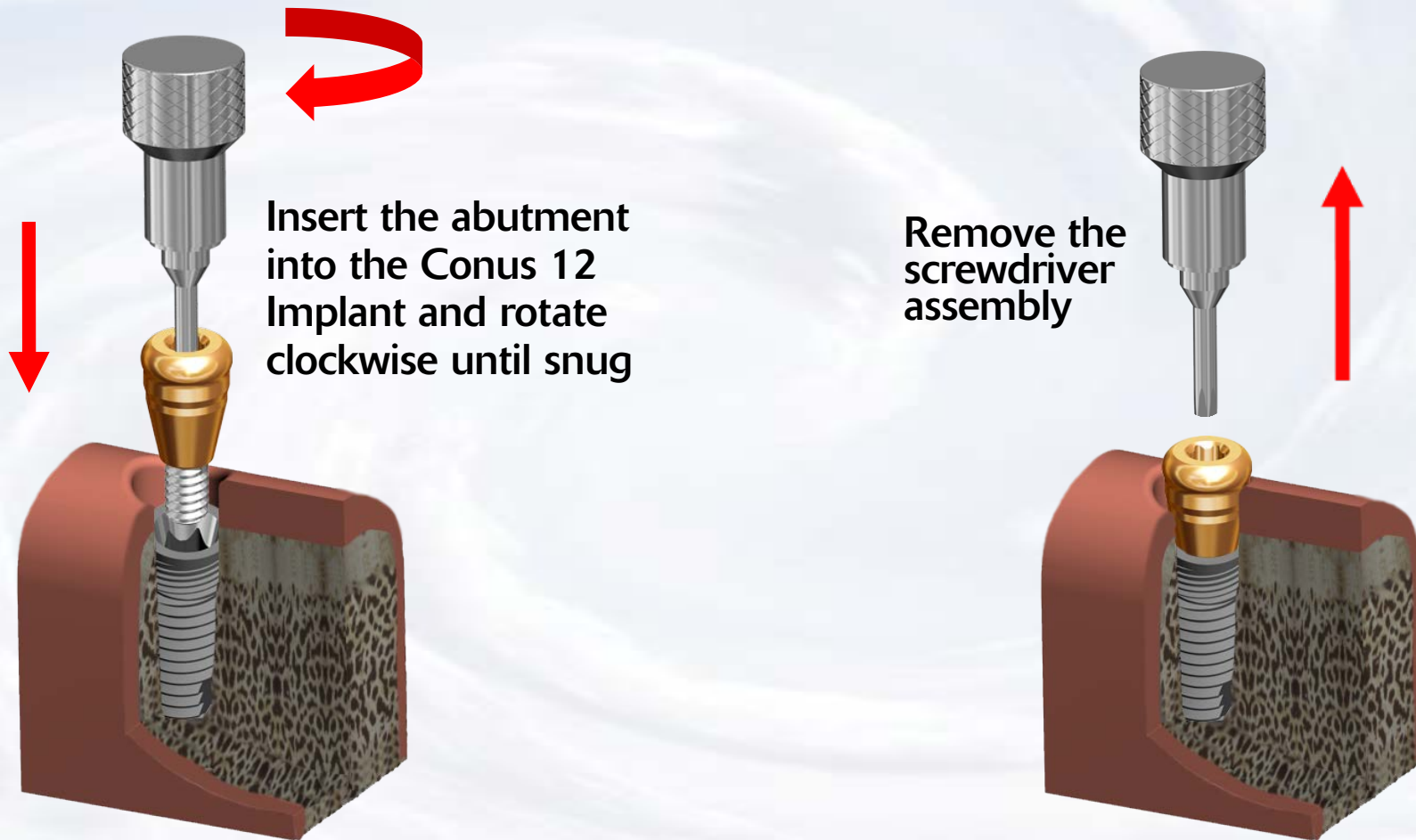
# Overdenture Chairside Technique

Assemble screw driver with  
Thumb Knob



Blue Sky Bio

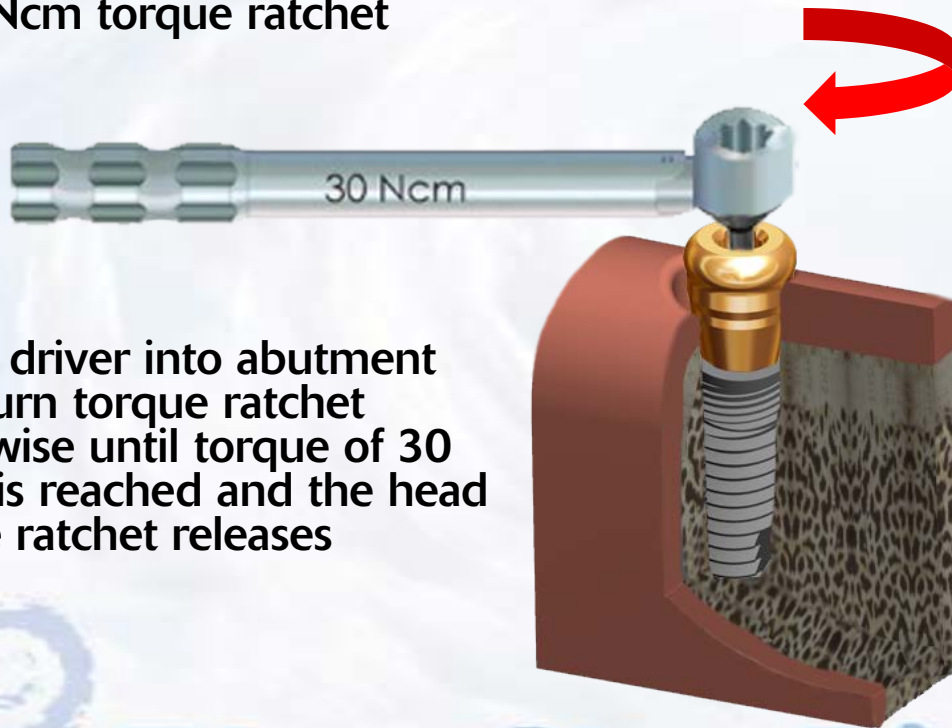
# Overdenture Chairside Technique



# Overdenture Chairside Technique



Insert the Hex Driver within the 30Ncm torque ratchet



Insert driver into abutment and turn torque ratchet clockwise until torque of 30 Ncm is reached and the head of the ratchet releases



Abutments in place



Blue Sky Bio

# Overdenture Chairside Technique



Place black processing insert on the insertion tool

Snap black processing insert into metal housing

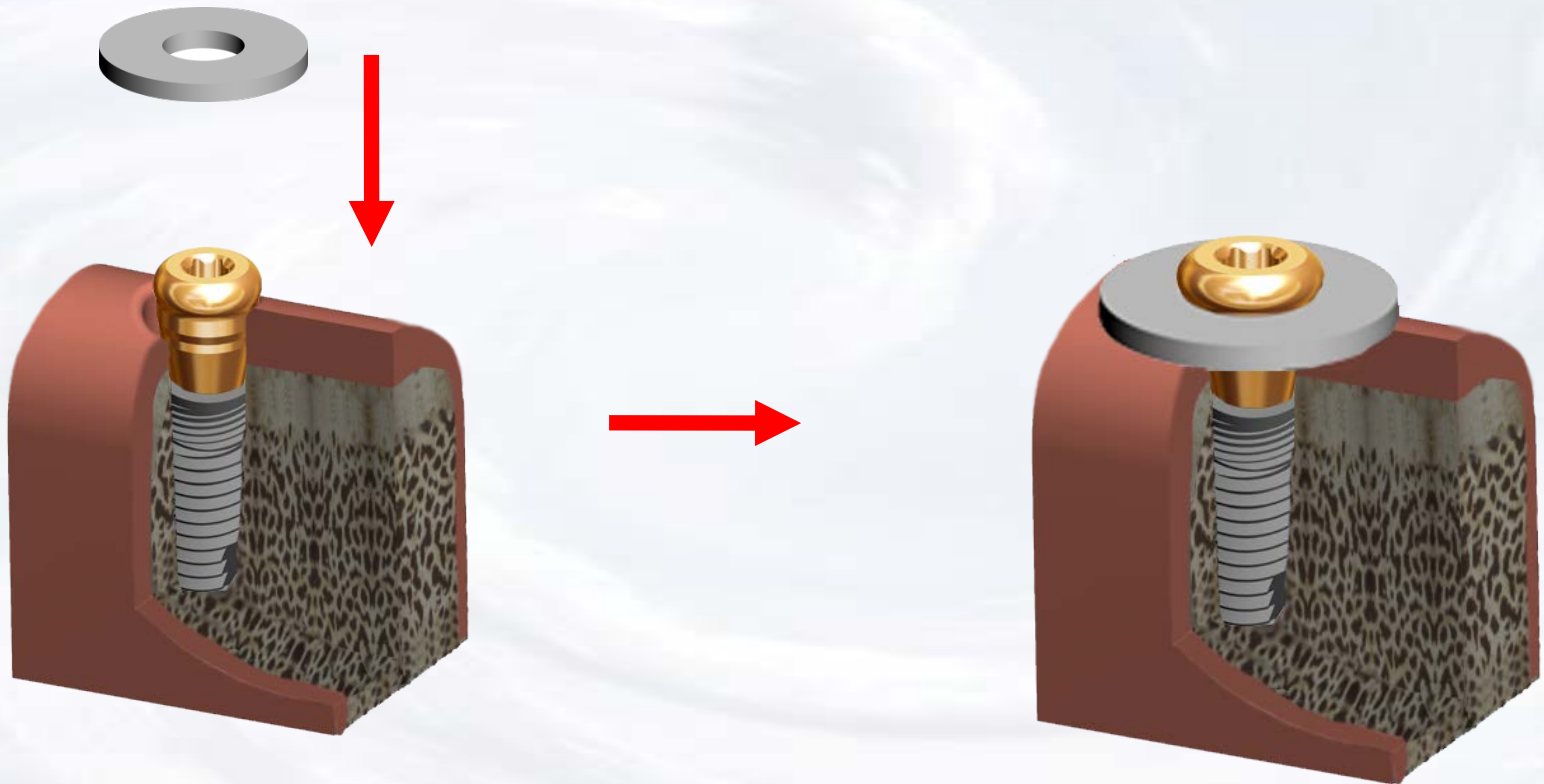


Blue Sky Bio



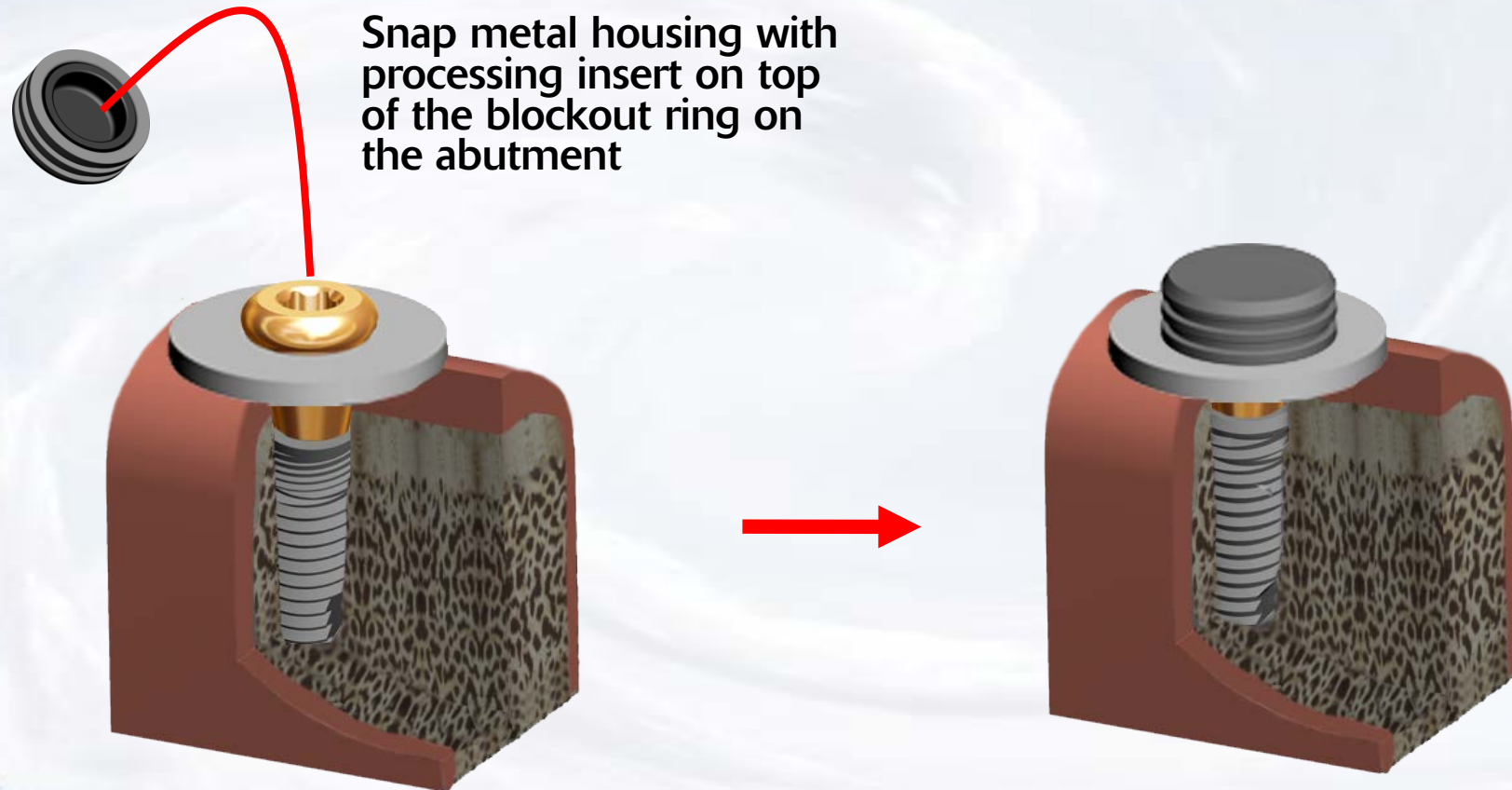
# Overdenture Chairside Technique

Put silicon blackout ring on the abutment



Blue Sky Bio

# Overdenture Chairside Technique



Blue Sky Bio

# Overdenture Chairside Technique



Remove enough material from the tissue side of the denture to ensure that it does not interfere with the housings. Typically it is necessary to make the cavity in the denture 2-3mm wider and 1-2mm taller than the housing



Insert denture and ensure that when it is fully seated it does not touch the housings





# Overdenture Chairside Technique



Insert resin of choice into the cavities in the denture



Insert denture again over the housings and with the patient occluding on the denture

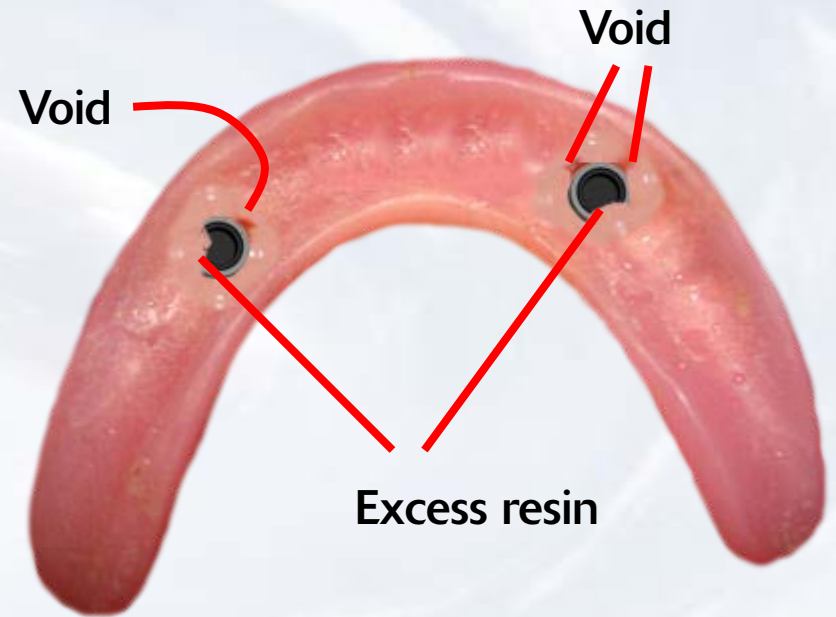


**Blue Sky Bio**

# Overdenture Chairside Technique



Let resin cure with denture in appropriate occlusion



Remove denture from mouth and fill any voids with resin.  
Trim any excess resin around the housing and on the ridge area



**Blue Sky Bio**

# Overdenture Chairside Technique



Remove the black processing insert with the sharp point of the removal instrument



Place the insert with the desired retention into the housing



**Blue Sky Bio**

# Overdenture Chairside Technique



Finished prosthesis with  
housings and inserts in place



**Blue Sky Bio**